

## Generic Backlit Film Printing Instructions for **Other Inkjet Printers**

**Paper:** The backlit film has two distinct sides, one glossy and one matte side. **ONLY THE MATTE SIDE CAN BE PRINTED ON.** Please check your printer to find out how to load the film to print on the correct side.

**Printers:** You must have an inkjet printer to print on the backlit film. Laser printers have heat rollers and will melt and warp the film, which can also cause serious damage to your laser printer. **DO NOT RUN THIS FILM THROUGH A LASER PRINTER.**

**Print Settings:** Every inkjet printer has a different print dialog box and options. Below please find general instructions for the best print quality.

1. In your print dialog box select “Print Properties”.
2. In the Print Properties dialog box find the “Media” setting (usually under Paper/Quality tab).
3. Select any MATTE paper type, such as “Matte Photo Paper” or “Enhanced Matte Paper”.
4. Under the “Advanced Settings” look for a setting that indicates “Print Borderless” or “Minimize Margins” so the print will extend as far to the edges as your inkjet printer is capable of.



**DISTINCTDISPLAYS**

## **Epson XP-15000 Series** Backlit Film Print Instructions



&

## Generic Backlit Film Printing Instructions for **Other Inkjet Printers**

**Paper:** The backlit film has two distinct sides, one glossy and one matte side.  
**ONLY THE MATTE SIDE CAN BE PRINTED ON!**

**Make sure that your artwork and text are at least .375 inch (3/8”) from each side of your prints to leave room for the overlap of the display frame.**

*You will need a USB cord to connect to the printer, but it is NOT INCLUDED with the printer.*

# Epson XP-15000 Series

## Printer Setup

We have supplied you with a digital copy of this instruction manual via email. Use the following instructions to setup your printer, install Adobe Reader DC, and install the print configuration file.

### Epson XP-15000 Series Manufacturer Setup :

1. Unpack your new printer and follow the manufacturer's instructions for setup.
2. Use the manufacturer's supplied disc to install the printer's software on the computer you will print from.
3. Follow all steps until the installation is complete.

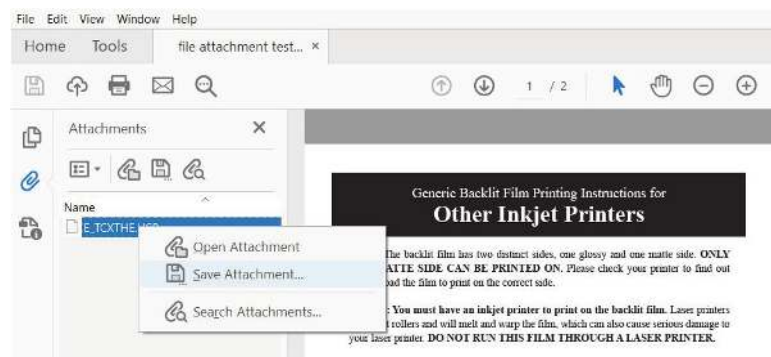
### Adobe Reader DC Installation :

We suggest that you use Adobe Reader DC to print your files. Your computer may have this program already installed. Adobe Reader is to use and download from Adobe.

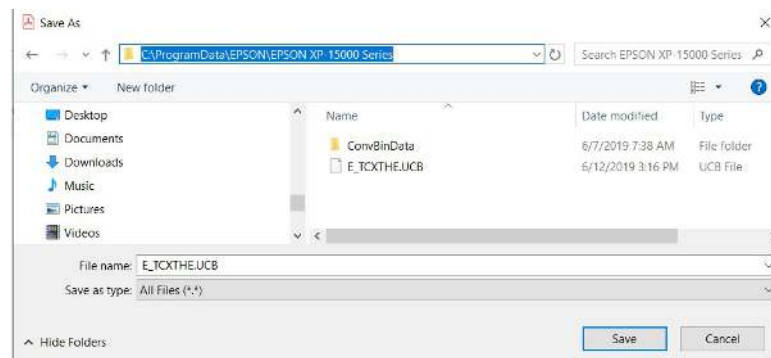
Simply go to the following link and follow the instructions for setup. <https://get.adobe.com/reader/>

### Distinct Display Backlit Film Configuration File Installation :

1. Open the digital version of these instructions using Adobe Reader DC
2. Locate and select the attached file. Using your mouse, right-click on the file and select "Save Attachment".



3. Save the attached file in the following directory: C:\ProgramData\EPSON\EPSON XP-15000 Series



4. When prompted, overwrite the existing file and save.

You are now ready to print onto Backlit Film.

# Backlit Film Print Instructions

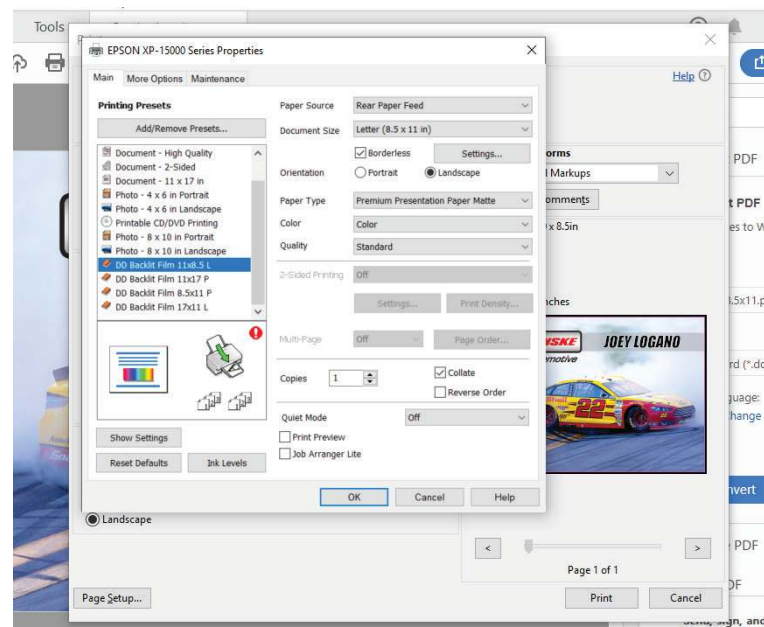
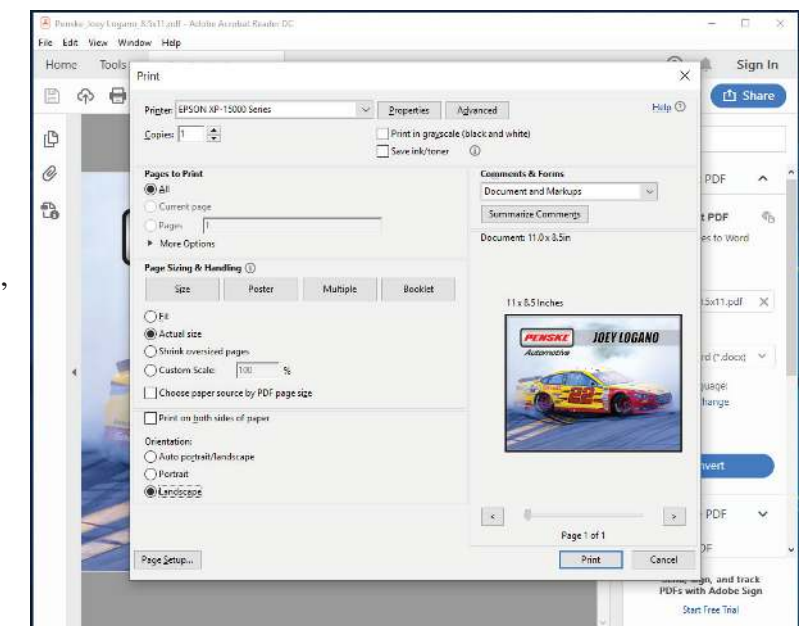
Printing to your Epson printer can be done from any program that allows you to print. In most cases, the program you are using will allow you to open and modify the printer settings for the size and orientation of your print. Below we have outlined printing directions using the Adobe Reader DC Program previously installed on the last page.

### Printing To the Epson XP-15000 :

You can print your file from the program that it was created from. In the following instructions, we have converted our design file to .pdf format and will be printing from Adobe Acrobat Reader DC.

1. Open the file to be printed.
2. Select the print option from the File tab.
3. In the printer tab, select the Epson XP-15000.

\*Note that there are scaling options for all printers. You will want to print at 100% or the "Actual Size" of the file.



4. To the right of the printer tab select the Properties Button
5. Under the Main tab, you will see a list of printing presets to choose from. There are 4 presets for Distinct Display Backlit Film. Choose the correct preset for the file you are printing.

\* You have two presets for both 8.5x11 (Letter) and 11x17 (Tabloid). The designation, "P" stands for Protrait and the letter "L" stands for Landscape.

6. Select OK. You are now ready to select the print button. In most programs, you will see a preview of your file for reference to ensure accuracy.